


COMPANY PROFILE



 +966 54 522 7796
+966 54 608 9907

 info@sigmateclb.com

 Riyadh – Kingdom Saudi
Arabia

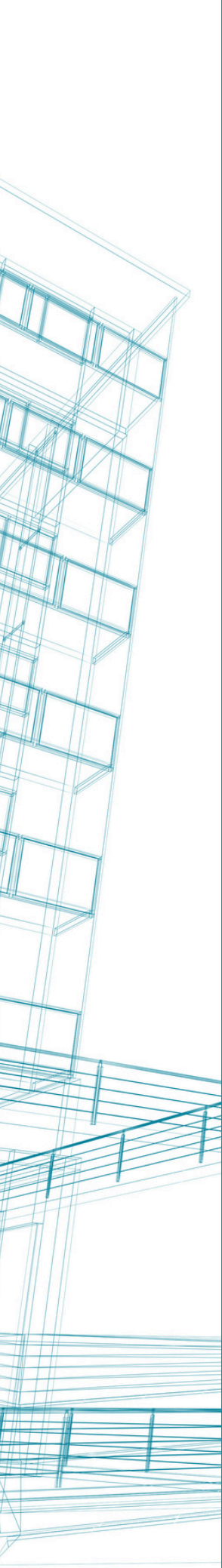


Table Of Contents

01	Company Summary
02	Mission & Vision
03	Project Management
04	Services
05	Our Projects
06	Certificates Of Project Completion
07	Partners
08	Contact Information



WELCOME TO OUR COMPANY

Since 2019, SIGMAtec has been a trusted provider of maintenance and contracting services, delivering high-quality engineering solutions in MEP (Mechanical, Electrical, and Plumbing), Low current, Fit-Out, interior, and architectural works.

With a commitment to excellence, we handle everything from design and installation to maintenance, ensuring seamless execution tailored to each project's needs.



GROUP VISION

At SIGMAtec, we are committed to contributing to the Kingdom of Saudi Arabia's growth and development in line with Vision 2030.

With expertise in maintenance, contracting, engineering, fit-out, interior design, and architectural works, we support the advancement of infrastructure, construction, and technology.

Through innovation, sustainability, and collaboration, we help drive economic diversification and social progress.

Together with our partners, we are building a dynamic and prosperous future for the Kingdom.

GROUP MISSION



Mission Statement

At SIGMAtec, we deliver high-quality MEP, low current, fit-out, and interior solutions, ensuring excellence and affordability go hand in hand.



Customer Commitment

We aim to set new industry standards through innovative, reliable, and cost-effective services, tailored to meet each project's unique requirements.



Company Commitment

Exceeding expectations is our priority. We provide transparent communication, technical excellence, and customized engineering solutions to ensure full client satisfaction.



PROJECT MANAGEMENT

Our team of engineers, supervisors, and project managers ensures clients stay informed with real-time updates and detailed project plans from start to finish.

We are committed to on-site safety, timely delivery, and budget compliance, while maintaining the highest standards of quality and precision.

We implement task and scope-based project management methods to ensure efficiency and success.

END-TO-END ELECTRICAL ENGINEERING SOLUTIONS

At SIGMAtec, we deliver comprehensive electrical services that ensure safe, reliable, and efficient power distribution across all project types.

From initial design and engineering to installation, testing, and maintenance, our team provides high-performance systems that meet the highest standards of quality, safety, and sustainability.

Our expertise covers the full range of electrical infrastructure, including both Medium Voltage (M.V) and Low Voltage (L.V) systems, in addition to power distribution, lighting, grounding, and UPS installations.

Every project is executed with precision, technical excellence, and full compliance with international standards to guarantee seamless operation and long-term reliability.



END-TO-END ELECTRICAL ENGINEERING SOLUTIONS

Medium Voltage Systems

We design and implement durable and efficient M.V solutions that ensure stable power distribution for all applications. Our experience includes M.V switchgears, RMUs, and transformers, all engineered to deliver superior performance and safety.



Low Voltage Systems

Our L.V solutions are tailored to provide reliability and flexibility across diverse sectors. They include L.V switchgears, transformers, and complete power distribution networks integrated with generators, ATS, and power factor correction systems. We also provide advanced lighting, UPS, and earthing systems that ensure uninterrupted power and operational excellence.



At SIGMAtec, we combine technical expertise, attention to detail, and a deep commitment to quality to deliver sustainable, cost-effective, and future-ready electrical solutions for every project.

HVAC SERVICES

We supply and install package units, concealed units, chillers, split units, and window units, ensuring efficient climate control.

Our services include ductwork solutions such as insulated, pre-insulated, and black steel ducts, as well as chilled water pipe installation for reliable cooling.



FIREFIGHTING

We provide fire fighting solutions that ensure safety and compliance with industry standards.

Our services include the supply and installation of stainless steel vessels, pipes, and fittings, covering black steel, seamless steel, PVC, UPVC, and CPVC pipes.

We also offer BMI GI, welded grooved, PVC, and stainless steel fittings, along with a full range of valves (bronze, brass, cast iron, stainless steel) and flanges (SO, SW, WN, TH, BL) for reliable system performance.

PLUMBING SERVICES

Our plumbing services cover the supply and installation of sanitary systems, drainage solutions, pumps, storage tanks, and water heaters of all types.

We also specialize in detecting and treating all kinds of pipe leakages, ensuring a seamless water supply and drainage system.





FIT-OUT SERVICES

We provide complete fit-out solutions, transforming empty spaces into fully functional and aesthetically refined environments.

Our services cover all aspects of interior transformation, including tiling and flooring, with high-quality

installations of tile, wood, and vinyl; woodworks and joinery, crafting custom furniture, partitions, and decorative elements; aluminum and glass work, offering modern designs through the installation of doors, windows, partitions, and facades; and painting and finishing, ensuring a premium look with expert wall painting, wallpaper application, and decorative touches.

INTERIOR DESIGN SERVICES

we bring spaces to life with thoughtful designs that blend functionality and style. Our interior design services cover concept development, space planning, material selection, and custom furniture design.

Whether you're looking for a modern, minimalist look or a warm, inviting atmosphere, we create interiors that reflect your vision and enhance the user experience. From retail spaces to offices and commercial establishments, we ensure every detail aligns with your brand identity and practical needs.



LOW CURRENT



HOME AUTOMATION, BMS AND SECURITY

Our Automation and BMS solutions offer centralized control and monitoring of critical building systems, ensuring seamless functionality and energy efficiency across all facilities. Furthermore, our comprehensive security solutions employ state-of-the-art technologies to safeguard both physical premises and digital assets.

Brands: Somfy, Ajax, Siemens, KNX, Bosh, Pyronix, JABLOTRON.

Customers (Lebanon): Hakim villa ,succare villa, Uptown ,Mina 365.

FIBER OPTICS CONNECTIVITY INSTALLATION

Providing installation, supply, and maintenance services of fiber optic connectivity in both residential and commercial buildings.



Brands : Riyadh cables, Panduit, CommScope, R&M.

Customers: Precedence park,Paoli Building,Trillium Towers,Projection s.a.l, Al Hallab.

LOW CURRENT

NETWORKING

A fully-fledged network infrastructure encompassing network design, implementation, operation as well as support, for laying out a ground foundation for all communication means including data, voice, video as well as applications, for a furthest scalable robust and most secure network infrastructure based on the customer's current and future needs.

Brands: Cisco, HP, aruba, ubiquity, Fortinet, mikrotik, avaya, grand stream.

Customers: Live-in hotel ,Venue at Boulevard, Siary Palace, Bigtime Studios, Pizzeria Restaurant, Roberts group, Succar 701 , Al Najde hospital, Apotre school, Fares foundation, Ogero, kap-01,



FIRE ALARM SYSTEM

A system designed to detect and alert individuals using visual and auditory devices when smoke, fire, carbon monoxide, or other emergencies are present. Additionally, the system provides resistance against these emergencies.

Brands: Simplex, Notifier, honeywell, Zeta.

Customers: Crazy Pizza, Urth Cafe, Advacon, Live-in, venue, Nadeem group, King prince palace, Seyari, Kap-01, Suchi art.



LOW CURRENT

ACCESS CONTROL

It involves selectively authorizing entry, usage, or consumption in both physical and informational domains.

Brands: ZKTeco, dahua, Hikvision.

Customers: Live-in, Venue, Roberts group, Kortbawi school, maram café, Rocky plast ,Kap-01.

Video Surveillance Closed-Circuit Television-CCTV

Offering installation, supply, and maintenance of CCTV and video surveillance services for commercial and residential properties.

Brands: Honeywell, dahua, Hikvision.

Customers: Live-in, Siary Palace, maram restaurants, Roberts group, Tarshish municipality, Uptown, Kap-01.



LOW CURRENT

Public address & Audio Visual

SIGMAtec specializes in providing, designing, installing, and supporting services for PA & AV solution including sound system, home sound and multi zoning, background music, home theatre, conference system and more.

Brands: Bose, Bosch , TOA , Samsung.

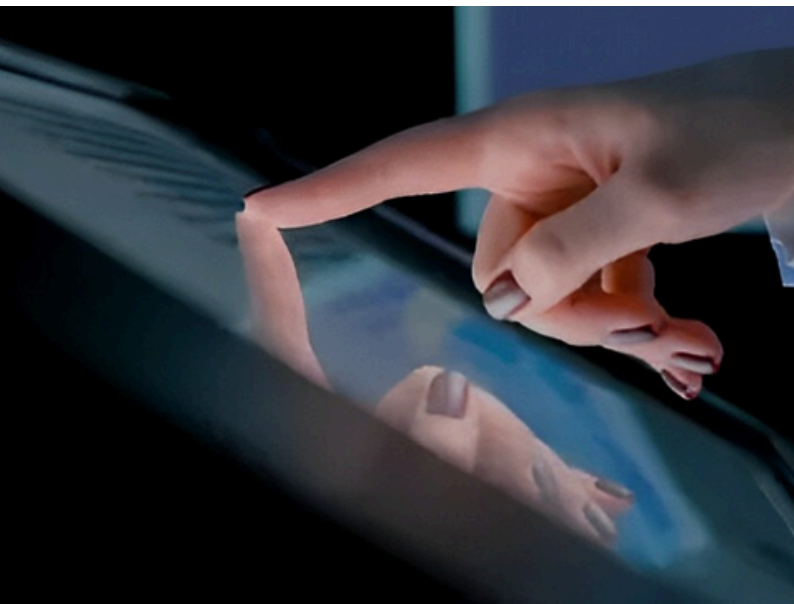
Customers: Pizzeria, Roberts group, Nadeem group, Hmaira official school.



QUEUE MANAGEMENT SYSTEM

Simplify customer flow and optimize operations with our user-friendly QMS system. Gain real-time queue insights and make data-driven decisions to improve efficiency. Additionally, our Easy-Q mobile app allows customers to conveniently reserve their spot in line, enhancing the overall queue management experience.

Brand: Only net.



LOW CURRENT

DIGITAL WAYFINDING SOLUTION

SIGMAtec's revolutionary system is designed to transform navigation and customer experiences in malls and public spaces. Our interactive solution empowers effortless wayfinding, enhancing satisfaction, engagement, and foot traffic.



Enhanced Satisfaction

Streamlined navigation reduces frustration, improving the overall experience.

Engaging Experience

Interactive touchscreens captivate users, encouraging exploration and longer stays.

Increased Foot Traffic

User-friendly spaces attract more visitors, potentially leading to higher sales.

Operational Efficiency

Reduce manual assistance and printed materials, optimizing staff resources.

Customization and Immersion

Tailor experiences with our advanced software to match your venue's unique requirements.

Craft an immersive journey that leaves a lasting impact on visitors.

Brand: Allsee Uk, Software, 22mars usa.

OUR PROJECTS

GENERAL SECURITY – Khoreis Road

LIGHTING + DMX CONTROL – *area: 1200 sqm*



OUR PROJECTS

PIZZERIA

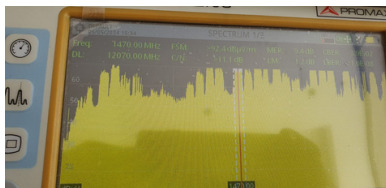
ELECTRICAL WORK – LOW CURRENT WORKS



OUR PROJECTS

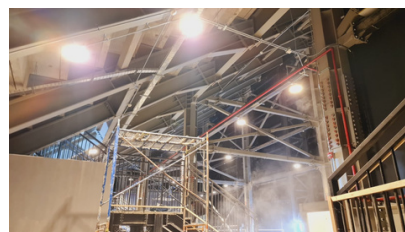
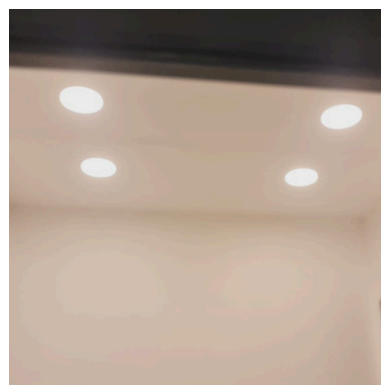
SIARY PALACE

LOW CURRENT WORKS: FIRE ALARM – NETWORKING – TV – CCTV – IPTELEPHONY



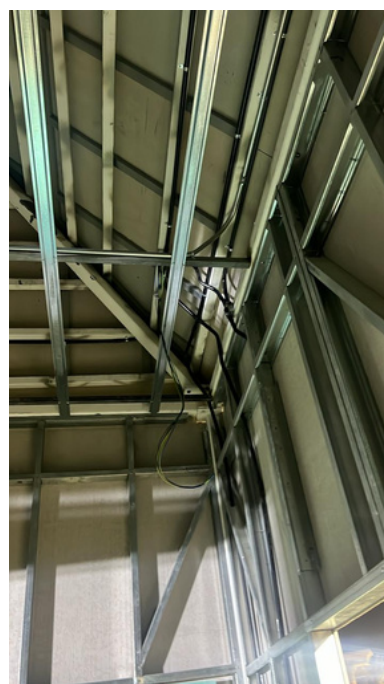
OUR PROJECTS

ARENA HILAL STADIUM ELECTRICAL WORK



OUR PROJECTS

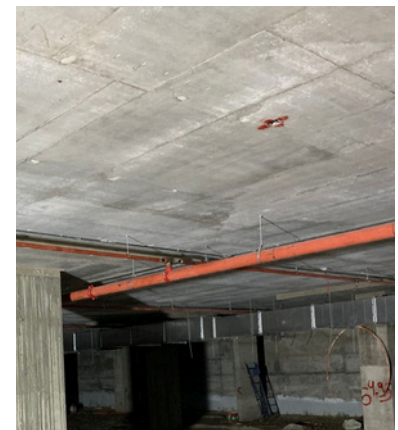
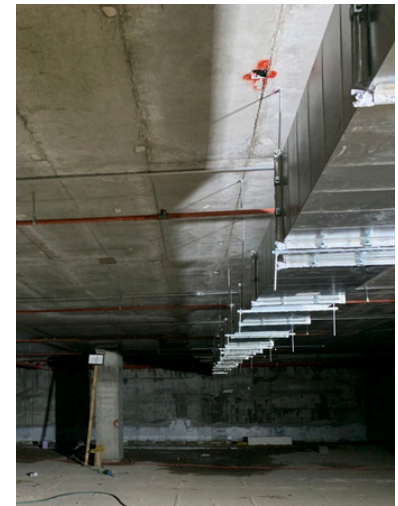
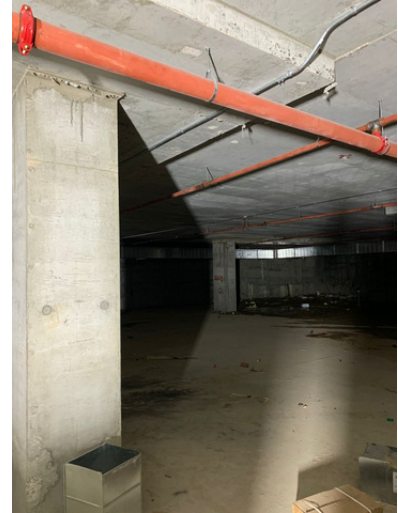
BOULEVARD AFRICA ELECTRICAL WORK



OUR PROJECTS

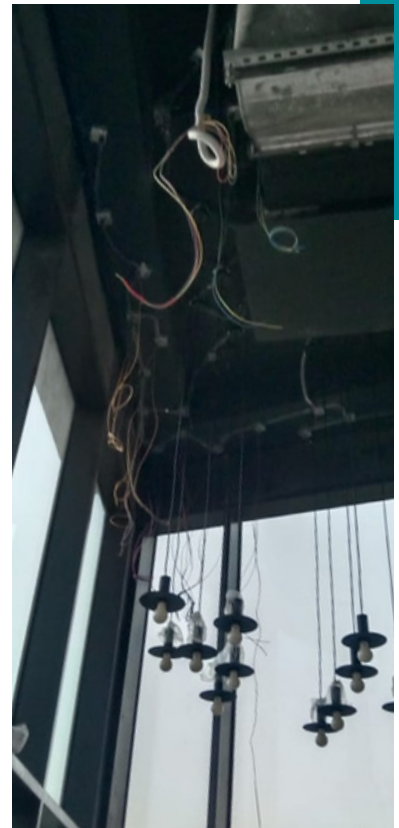
OFFICE OF RABWA

FIRE ALARM



OUR PROJECTS

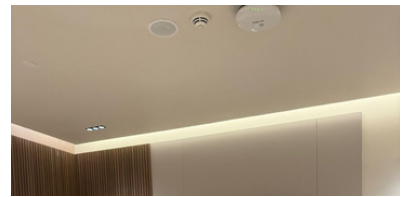
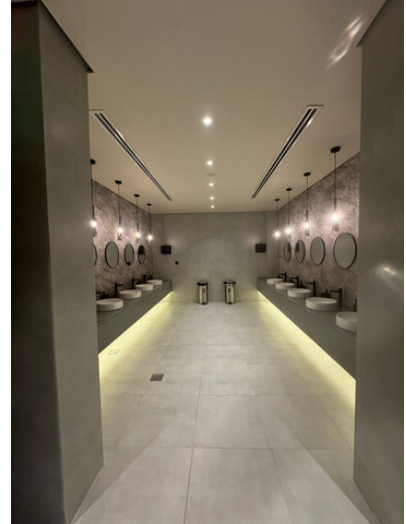
BIGTIME STUDIOS ELECTRICAL WORK



OUR PROJECTS

VENUE

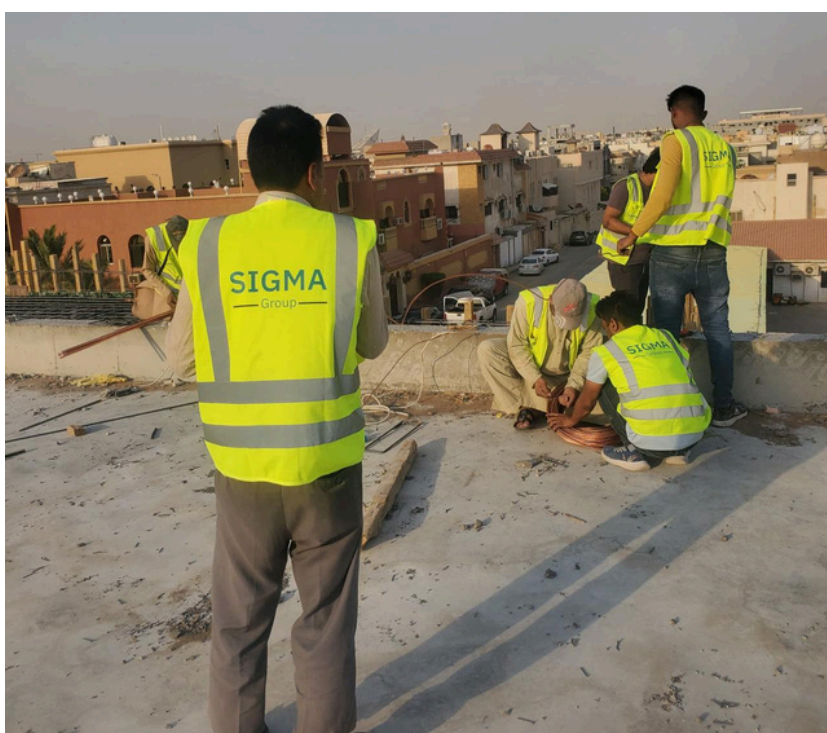
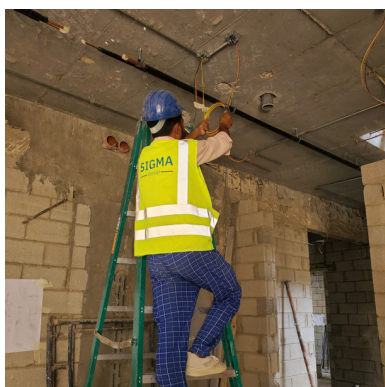
ELECTRICAL WORK – LOW CURRENT WORKS



OUR PROJECTS

LIVE IN

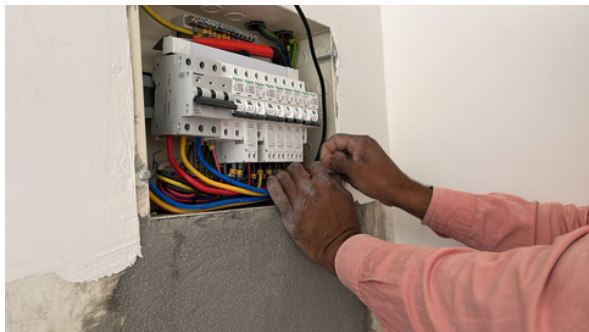
ELECTRICAL WORK – LOW CURRENT WORKS



OUR PROJECTS

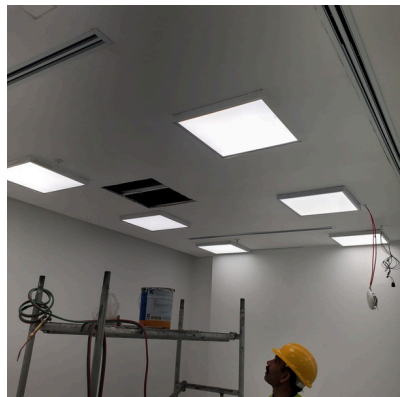
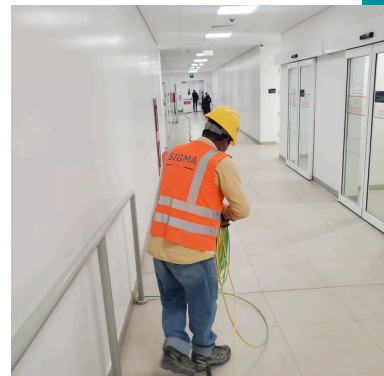
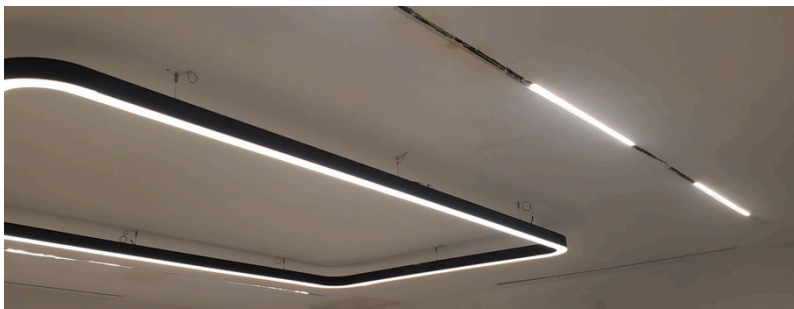
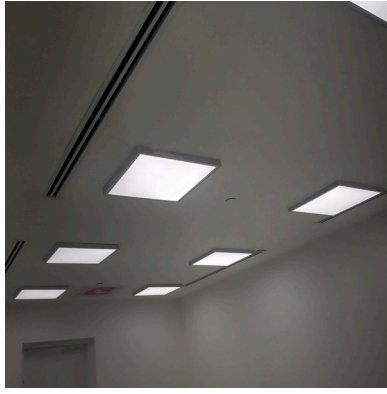
LIVE IN

ELECTRICAL WORK – LOW CURRENT WORKS



OUR PROJECTS

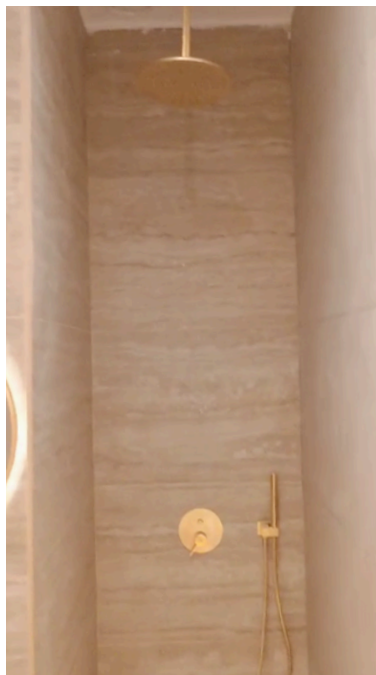
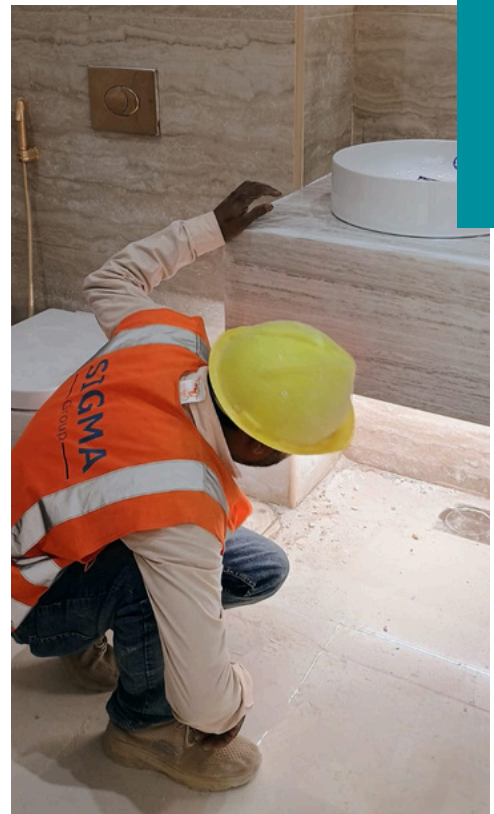
AIRPORT - TERMINAL 3 - 4 MEP WORKS



OUR PROJECTS

AIRPORT - TERMINAL 3 - 4

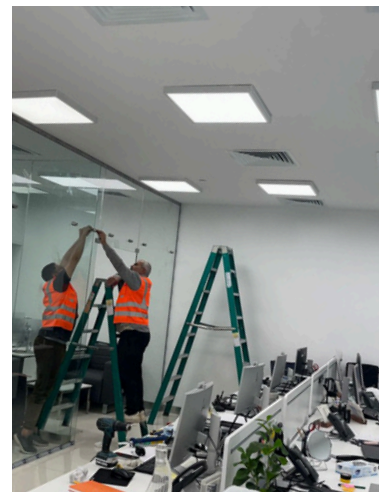
FIT OUT



OUR PROJECTS

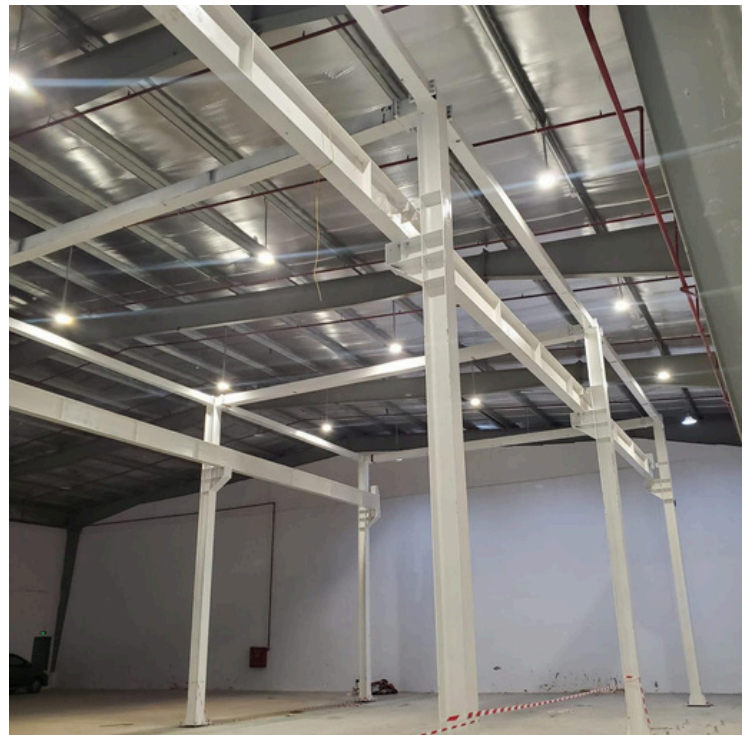
AIRPORT - TERMINAL 5

FIT OUT



OUR PROJECTS

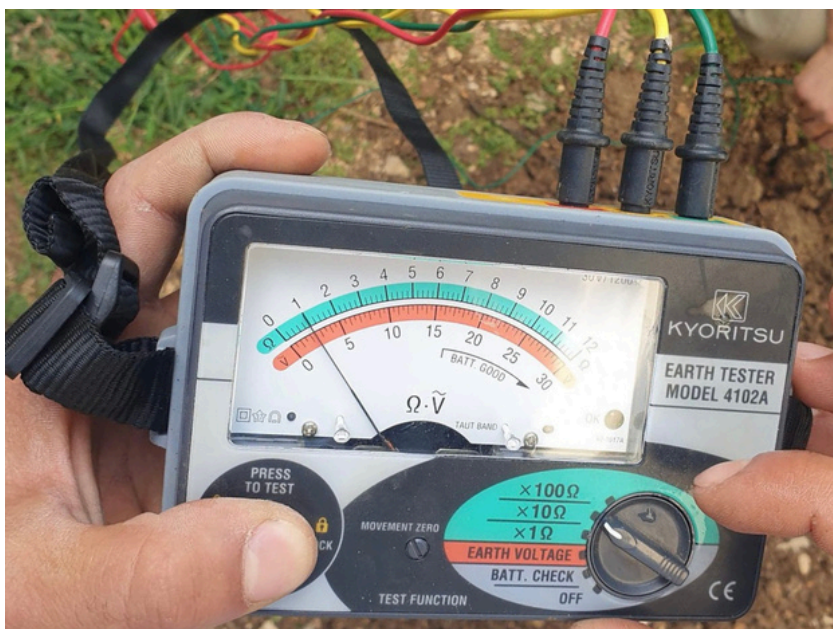
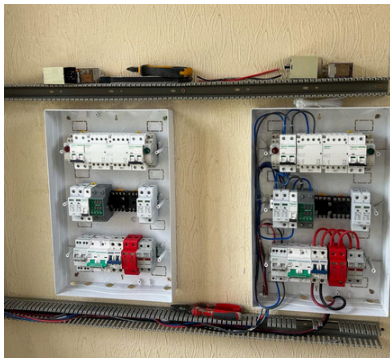
COASTAL FACTORY ELECTRICAL WORK



OUR PROJECTS

PROJECTS IN LEBANON

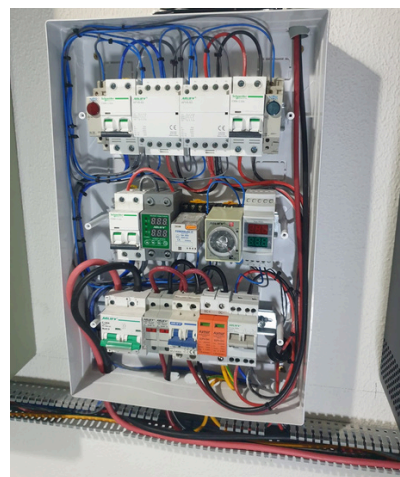
SOLAR SYSTEM



OUR PROJECTS

PROJECTS IN LEBANON

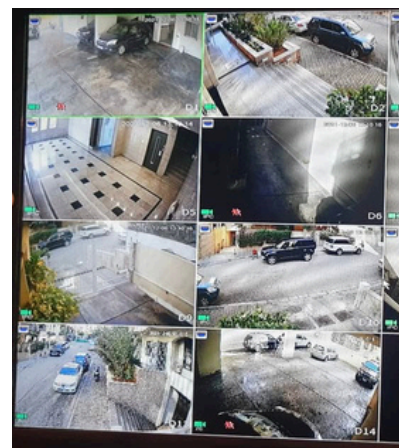
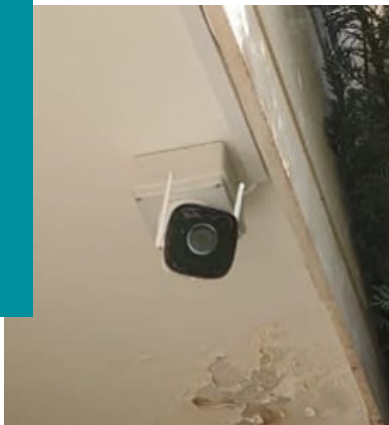
SOLAR SYSTEM



OUR PROJECTS

PROJECTS IN LEBANON

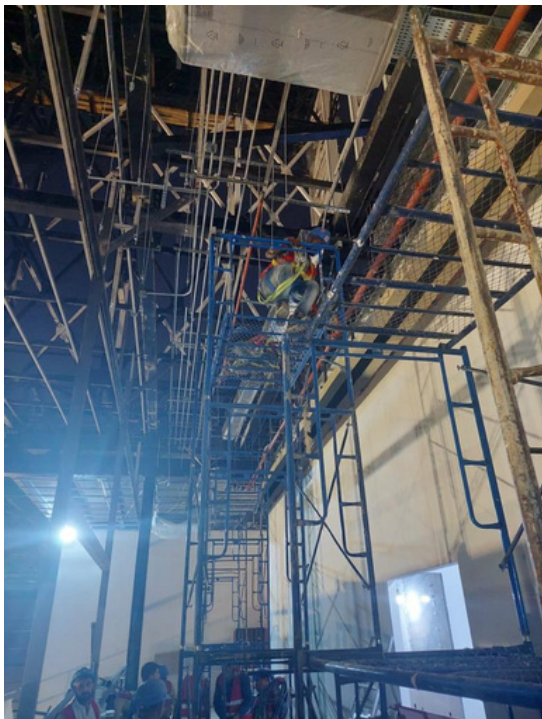
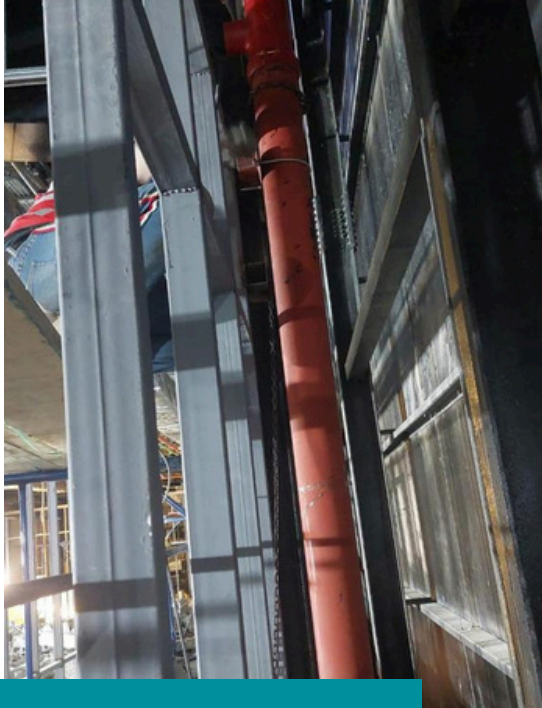
CCTV INSTALLATION



OUR PROJECTS

RIYADH BOULEVARD

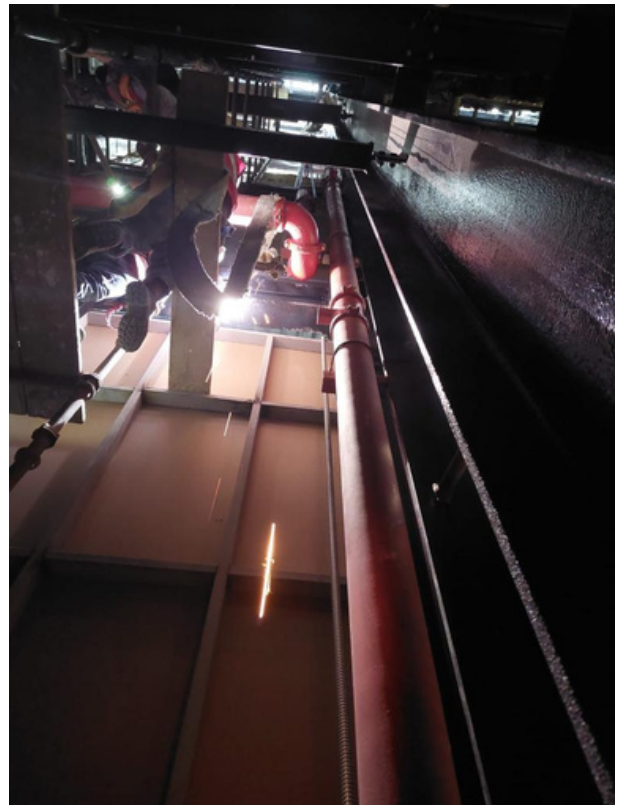
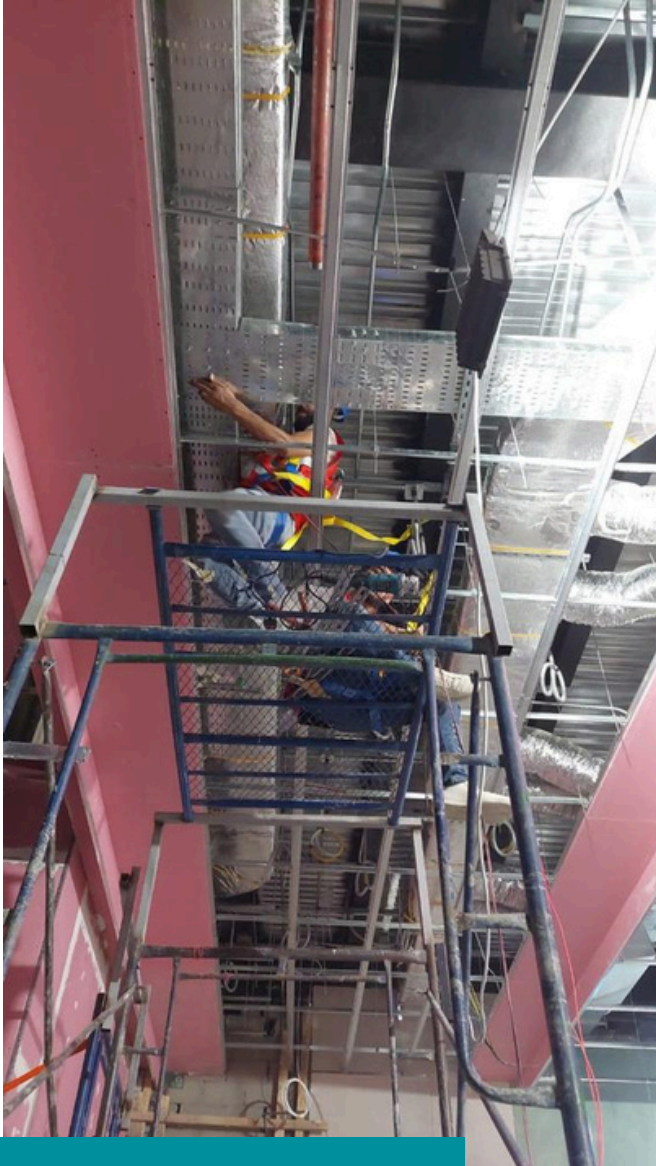
FIRE FIGHTING NETWORK



OUR PROJECTS

RIYADH BOULEVARD

FIRE FIGHTING NETWORK



OUR PROJECTS

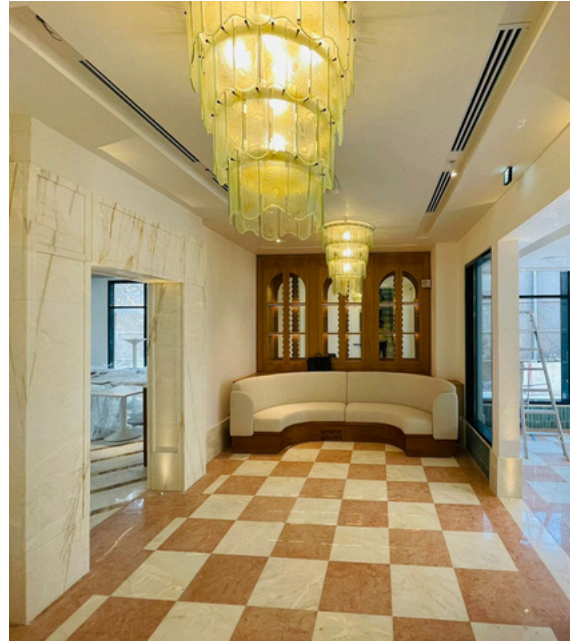
AGIO RESTAURANT

MEP WORKS



OUR PROJECTS

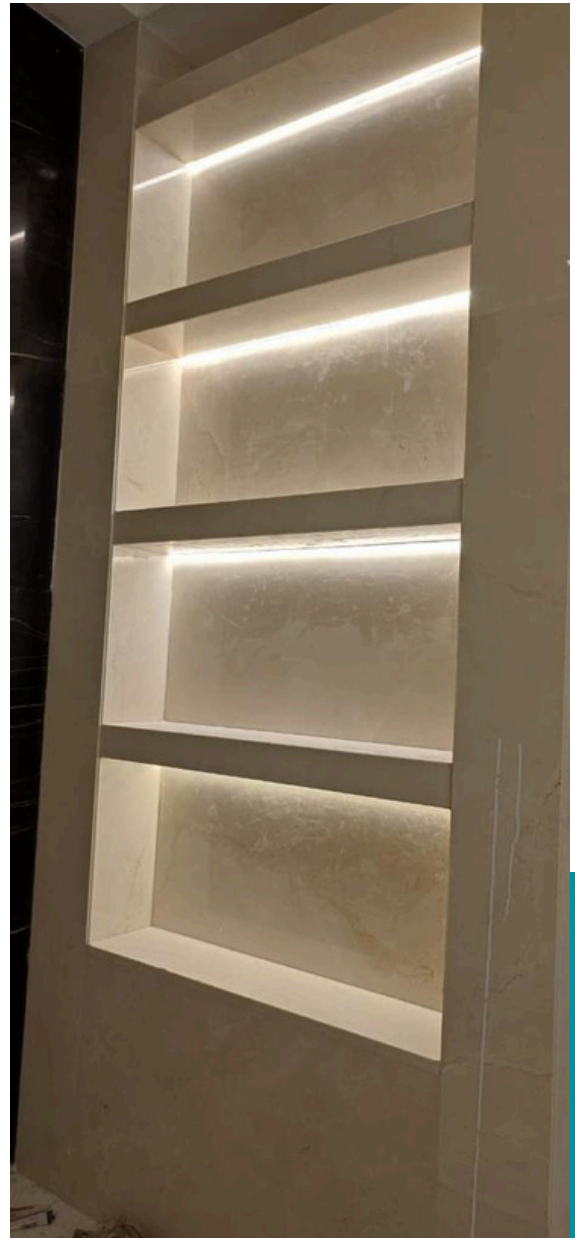
AGIO RESTAURANT MEP WORKS



OUR PROJECTS

PRINCE SAUD VILLA

MEP WORKS



OUR PROJECTS

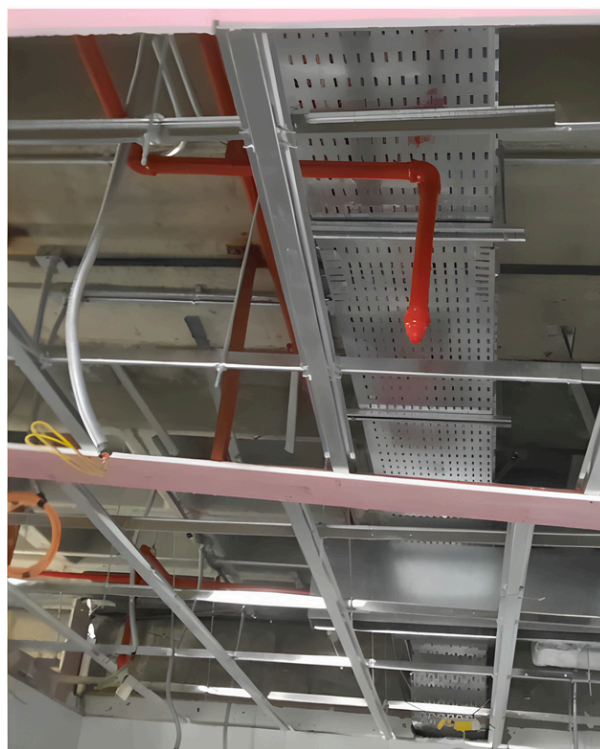
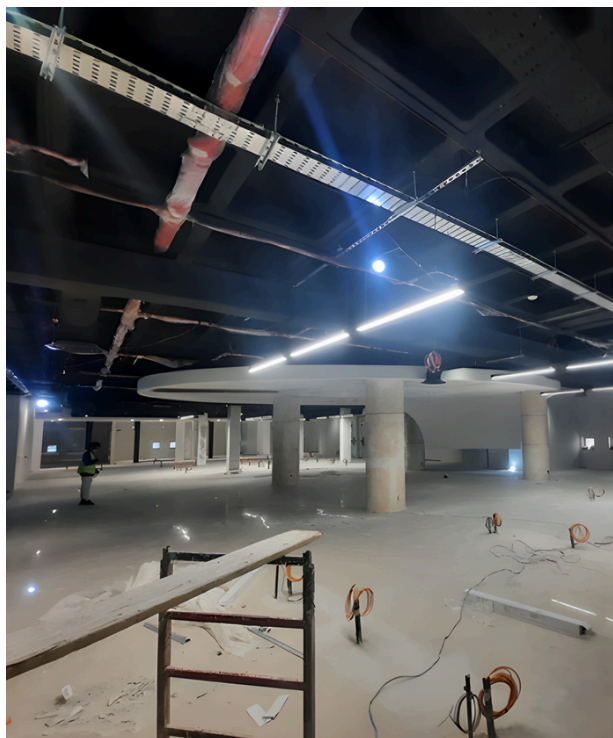
PRINCE SAUD VILLA
MEP WORKS



OUR PROJECTS

GUCCI, BOTTEGA VENETA

FIRE FIGHTING NETWORK CHEILD WATER



OUR PROJECTS

SADDLE HOUSE FIRE FIGHTING



OUR PROJECTS

KING ABDULLAH INTERNATIONAL GARDENS
CHILLERS PLAN, BOILERS PLAN



CERTIFICATES OF PROJECT COMPLETION



FURNISHING HOUSE

Interior Design & Execution
Office Furniture & Supplies
Tailor-Made Furnishing
Brand-centric Transformation

Custom Lighting Solutions
Landscaping Services
Pop-up Event Setup

Date: 12/12/2024

To:
Sigma Company
Riyadh, Kingdom of Saudi Arabia

Subject: Certificate of Completion Bigtime Studios Project – MEP Works

Dear,

This is to certify that Sigma Company has successfully completed all Mechanical, Electrical, and Plumbing (MEP) works for Bigtime Studios project executed under Furnishing House.

Sigma Company has completed their scope of works in accordance with the approved drawings, specifications, and project requirements to our full satisfaction.

We appreciate their cooperation and professionalism throughout the execution of the above-mentioned projects and wish them continued success in their future endeavors.



FURNISHING HOUSE

• +966 11 454 8780
• 770, Abu Bahr Al-Ahsan,
Abu Hurayra, Dammam, KSA
www.FH-est.com | info@fh-est.com

C.R. : 1030424837



FURNISHING HOUSE

Interior Design & Execution
Office Furniture & Supplies
Tailor-Made Furnishing
Brand-centric Transformation

Custom Lighting Solutions
Landscaping Services
Pop-up Event Setup

Date: 1/8/2025

To:
Sigma Company
Riyadh, Kingdom of Saudi Arabia

Subject: Certificate of Completion The Venue Project – MEP Works

Dear,

This is to certify that Sigma Company has successfully completed all Mechanical, Electrical, and Plumbing (MEP) works for The Venue project executed under Furnishing House.

Sigma Company has completed their scope of works in accordance with the approved drawings, specifications, and project requirements to our full satisfaction.

We appreciate their cooperation and professionalism throughout the execution of the above-mentioned projects and wish them continued success in their future endeavors.



FURNISHING HOUSE

• +966 11 454 8780
• 770, Abu Bahr Al-Ahsan,
Abu Hurayra, Dammam, KSA
www.FH-est.com | info@fh-est.com

C.R. : 1030424837



FURNISHING HOUSE

Interior Design & Execution
Office Furniture & Supplies
Tailor-Made Furnishing
Brand-centric Transformation

Custom Lighting Solutions
Landscaping Services
Pop-up Event Setup

Date: 1/23/2025

To:
Sigma Company
Riyadh, Kingdom of Saudi Arabia

Subject: Certificate of Completion Pizzeria Project – MEP Works

Dear,

This is to certify that Sigma Company has successfully completed all Mechanical, Electrical, and Plumbing (MEP) works for Pizzeria project executed under Furnishing House.

Sigma Company has completed their scope of works in accordance with the approved drawings, specifications, and project requirements to our full satisfaction.

We appreciate their cooperation and professionalism throughout the execution of the above-mentioned projects and wish them continued success in their future endeavors.



FURNISHING HOUSE

• +966 11 454 8780
• 770, Abu Bahr Al-Ahsan,
Abu Hurayra, Dammam, KSA
www.FH-est.com | info@fh-est.com

C.R. : 1030424837

CERTIFICATES OF PROJECT COMPLETION

شركة المعالم الرقابية العقارية

إلى من يهمه الأمر،

نفيدكم نحن شركة المعالم الرقابية بان شركة سيمغا للصيانة و الخدمات 7037942088 قد نفذت مشروع شقق سكنية في العليا من أصل كهرباء و ميكانيك وسباكة وأعمال تشطيبات متنوعة وتابع الاصل لثة من المهندسين المتخصصين والمشرفين الاكفاء وقد تم تسليم الاصل إلى الاستشاري وممثل العميل وقد انجزت أعمالها بكل دقة وتكافؤ و خلال الجدول الزمني المحدد لها.

و نقضوا بقبول فائق الاحترام و التقدير،

شركة المعالم الرقابية



شركة المعالم
الرقابية العقارية
سجل تجاري 1010783604

سجل تجاري 1010783604 - من العليا - شارع الامويين من حدائق - رقم التخلي 1113 - الرياض

INITIAL

التاريخ: 2025/05/13 م

إلى من يهمه الأمر،

نفيدكم نحن شركة إينشال السعودية بان شركة سيمغا للصيانة والخدمات ست.ت. 7037942088 قد نفذت مشاريع بلا مطار الملك خالد الدولي بلا 4 terminal 3 and terminal 5 من أعمال كهرباء وميكانيك وسباكة وأعمال تشطيبات متنوعة وتابع الأعمال لثة من المهندسين المتخصصين والمشرفين الاكفاء وقد تم تسليم الاعمال الى الاستشاري وممثل العميل وقد انجزت أعمالها بكل دقة وتكافؤ وخلال الجدول الزمني المحدد لها.

وتنضموا بقبول فائق الاحترام والتقدير

مدير عام مشاريع صالات مطار الملك خالد الدولي
إني جاسوع زهير





سجل تجاري رقم: 1010222413 90022415
شركة إينشال العربية السعودية المحدودة - 5575 طريق عنقاء من عناء - أتلانج وحدة رقم 23 قريش 2664-13314 المملكة العربية السعودية ت: +966 (0)10 5339450
Al Falah Unit No: 23, 6575 Uthman Bin Affan Road, P.O.Box: 13314-Riyadh 2664, KSA T: +966 (011) 450 5339 E: info@InitialSaudi.com



**IN
PARTNERSHIP
WITH**



**MECHANICAL
AND
PLUMBING**



FIT-OUTS



**DESIGN
AND
CIVIL WORKS**



WE LOOK FORWARD TO WORKING WITH YOU



+966 54 522 7796
+966 54 608 9907



info@sigmateclb.com



Riyadh – Kingdom Saudi
Arabia